



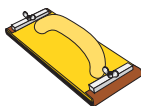
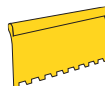
No. 5

Do - It - Yourself Solutions

# How to put up a ceiling rose



# What you will need for the job



DIY Cornice Adhesive  
DIY Trimming Knife  
DIY Hand Sander  
DIY Sandpaper 120 Grit  
DIY Plasterboard Screws  
DIY Dust Mask  
DIY Plasterboard Nails

## Other

Boral Plasterboard Sheet  
Selected Ceiling Rose  
Small Tool  
Sponge (clean up)  
Notched Spreader  
Timber/Masonry Nails  
(to use with timber or masonry ceiling)

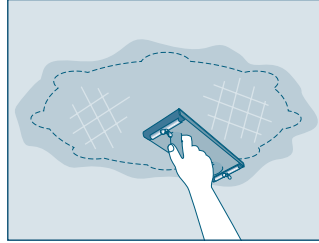
# How to put up a ceiling rose

## Safety First - Organise an Electrician

Have an electrician isolate light fittings before drilling a hole through the centre of the rose to push the light fitting wiring through.

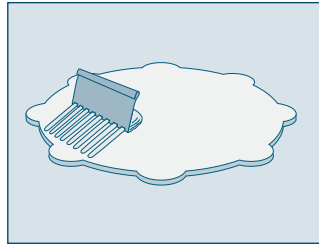
## Preparation

- 1 If the ceiling is painted, scuff the surface using 120 Grit Sandpaper and lightly score the area to be covered using a trimming knife.
- 2 Make sure all surfaces to be glued are free of dust, flaky paint or unstable surfaces.



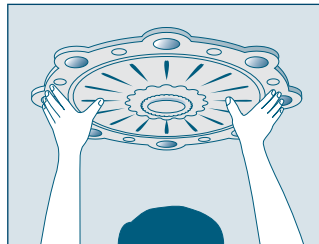
## Applying adhesive

- 1 Mix DIY Cornice Adhesive according to the instructions on the packaging.
- 2 Apply adhesive with a notched spreader to form 12mm x 12mm beads (strips) of adhesive on the back of the ceiling rose. Be careful not to apply too much so it does not creep out from under the edge of the rose.



## Fixing the ceiling rose

- 1 Push the rose into the required position on the ceiling and hold for a few minutes.
- 2 Drive 2 or 3 screws of suitable length through the rose into the ceiling joist or batten and prop the rose from the floor to hold in position until adhesive sets. When propping use a soft surface to contact the rose face to eliminate surface damage. An old towel is ideal.
- 3 Wipe/scrape off excess cornice adhesive with a sponge, brush or small tool.



## Health & Safety

- 1 Do not ingest contents of product packaging. If ingested, seek medical advice.



- 3 If dust or paste causes skin irritation, use impervious PVC, Nitrite or Rubber gloves.

- 4 Keep contents out of reach of children.



- 2 Avoid creating dust when handling, mixing or sanding as dust from packaged products may contain crystalline silica. Repeated inhalation of silica dust over long periods of time may lead to bronchitis, silicosis or cancer. If dust is unavoidable, ensure adequate ventilation, wear eye protection and an approved disposable face mask that conforms to Australian Standards AS 1716 Type P1 or P2.

## Contact Information

In Emergencies call 1800 033 011, Poison Information on 13 11 261

Note: If you don't feel confident enough to take on this project, contact your local Boral Plasterboard sales outlet for a list of competent contractors in your area.

For further technical assistance or more information on Boral Plasterboard DIY products, please contact TecASSIST 1800 811 222 or your local Boral Plasterboard sales office:

QLD 07 3215 2244  
TAS 03 6278 9966  
NSW 02 9638 0571

SA 08 8240 8888  
ACT 02 6280 4243  
NT 08 8984 4484

VIC 03 9214 2138  
WA 08 9400 2666

Boral Australian Gypsum Limited  
A.C.N. 004 231 976  
676 Lorimer St, Port Melbourne Vic 3207  
<http://www.boral.com.au>

 is a registered trademark of Boral Plasterboard.

September 2003  
Products Systems Solutions

